

Remake  
**Montezuma's  
Revenge**  
Featuring  
**PANAMA  
JOE™**



by



B

A

D

MOUSE

Bad Mouse Digital Art

## Panama Joe:

Brave adventurer, whit hem you will FACE diferent enemys, and a hard labyrinth to survive and to carry the great treasure of Montezuma´s Pyramid.



Skull:

Is a skull, this one, can spin or jump and be alone or in group.



Snake:

This one is a static snake, but not less difficult, take care of your jumps and you will beat them.



Spider:

This is the ugliest enemy of Panama joe, be aware of the movement of the spider, because they go up and down the ladders and they can be very fast.



## Killer Chain:

Blue chain that can appear and disappear, if you touch them you will die instantaneously.



## Machines:

Strange transporting tapes that move panama's bodie.



## Fake Floors:

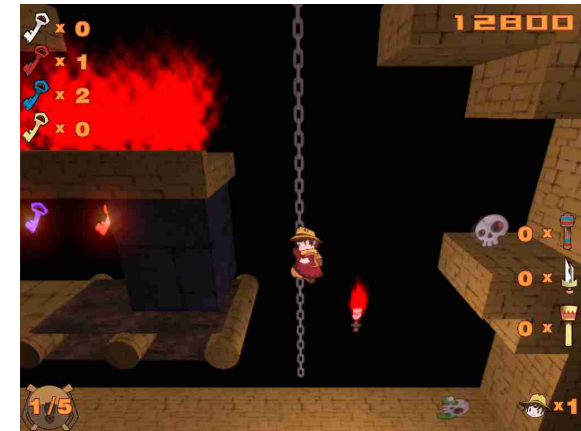
Floors that appear and disappear, be cautious or you will fall.



**Doors:** This doors wont let you advance, you can only open the doors with the corresponding key ( blue, red, white and gold )



**Chains:** Use it to climb down and up the levels, you can also jump from one chain to the other chain.



**Stairs:** Go up and down the stairs, but you cannot jump when you are in one of them

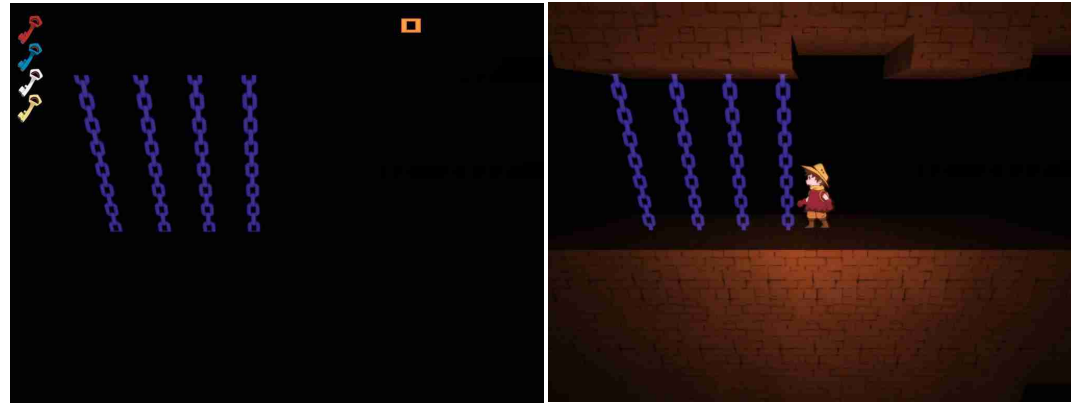




Tube: You can slide quickly in the tube,  
but you can't return.



Darkness: There are levels where the darkness is total, remember the  
torch becose it will get you path iluminated.



Fire: The fire is all over the levels,  
if you touch it you will be death.



**Keys:** With these keys you will be able to open different doors, they have different colors and you need to find the right key to that door!

50point



White



Red



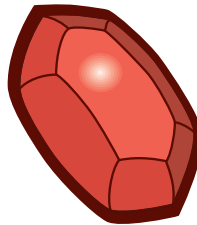
Blue



Gold

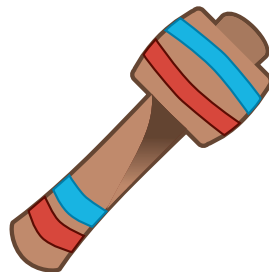
**Jewels:** You have to find the precious jewels all around the pyramid, take them and your score will rise.

1000point



**Mallet:** This is a tool that makes you invulnerable for seconds to the attack of the enemies

100point

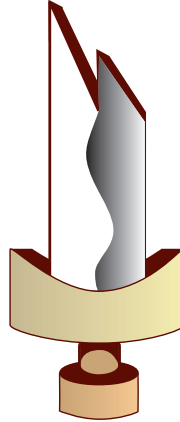




Sword:

This is the only weapon in the game, you can kill one enemy, when this happen the sword disappears

50point



Torch:

The torch is the only tool that can save you from the dark.

Remember you can To ignite/extinguish torch (Key A)

3000point



Keys

Score



Items

Storage

Lives

Pause: Key P

Menu: Esc

To ignite/extinguish torch: Key A

interface



Montezuma' s Revenge 1984 Parker Brothers.

Montezuma' s Revenge Remake 2006 Bad Mause.

### Bad Mause

Director	Manuel F. Gonzalez
Programer	Manuel F. Gonzalez
Level Desing	Manuel F. Gonzalez
Art Director	Carla Andhre
Desing Remake	Carla Andhre
Animator	Carla Andhre
Sound	Manuel F. Gonzalez
	Carla Andhre
Painter	Carla Andhre
Traslate	Karol
	Manuel F. Gonzalez



T h a n k s   t o  
R e t r o   R e m a k e s .  
A g r o t e c k .  
B l a n c a   L u c e r o .  
M a n u e l   G o n z a l e z .  
a n d   y o u





M o n t e z u m a ' s   R e v e n g e   R e m a k e   2 0 0 6

