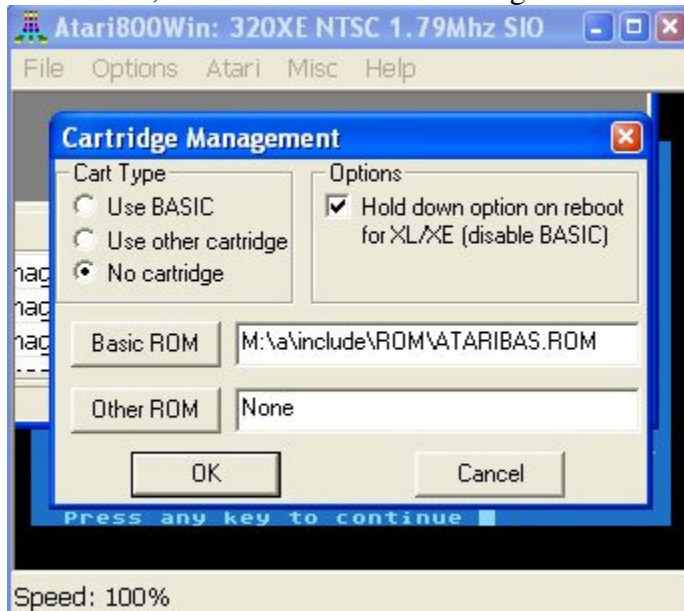
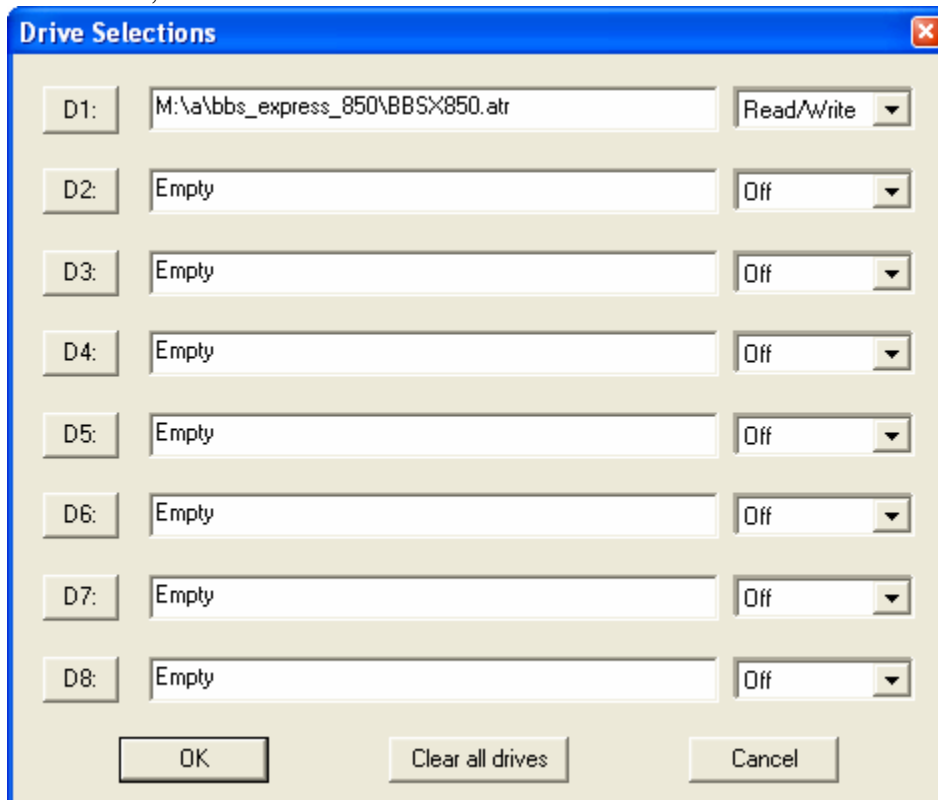


Setting up BBS on a Stick (BBS:Express 850 v1.0 and Atari800Win 2.5c)

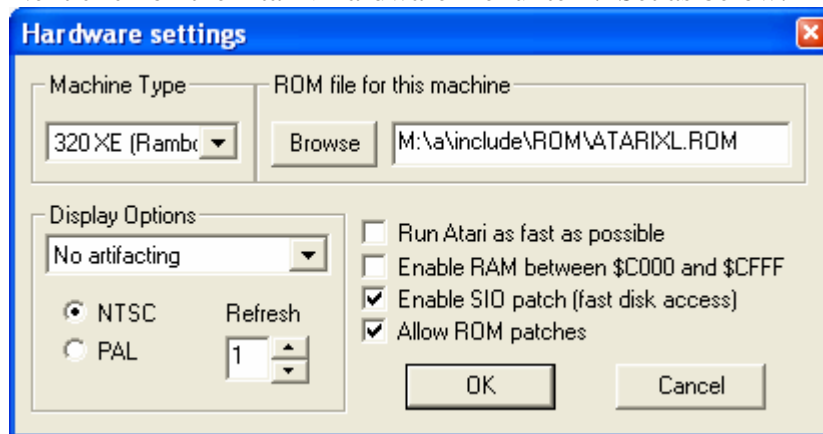
1. UnZIP the distribution file (maintain the paths in the ZIP for best results)
2. Run a800win.exe from the a800win_25 folder.
3. In a800win, click on the Atari->Cartridge menu item. Set as below:



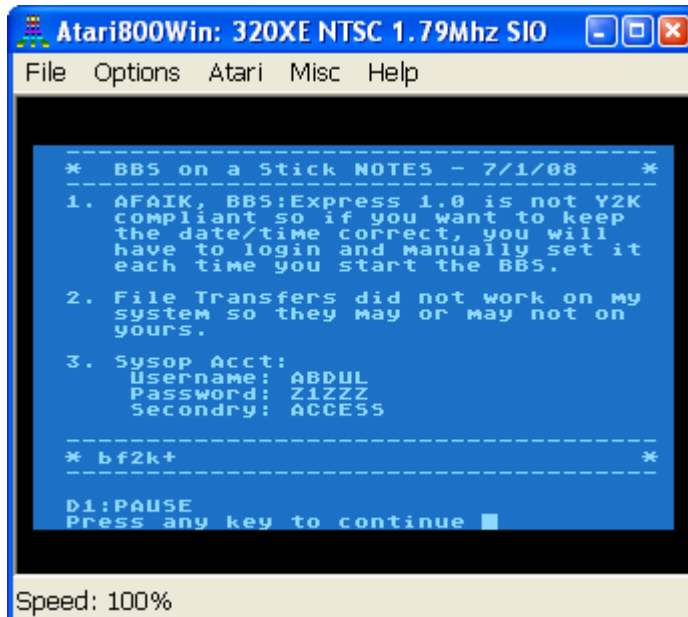
4. in a800win, click on the Atari->disk drives menu item. Set as below:



5. Next click on the Atari->hardware menu item. Set as below:



6. Then type {shift}-{F5} to force a cold reboot of a800win. You should see this screen of **NOTES** in a800win:



Note the sysop account and passwords setup.

7. Press ANY key to load the BBS.
8. Have fun.